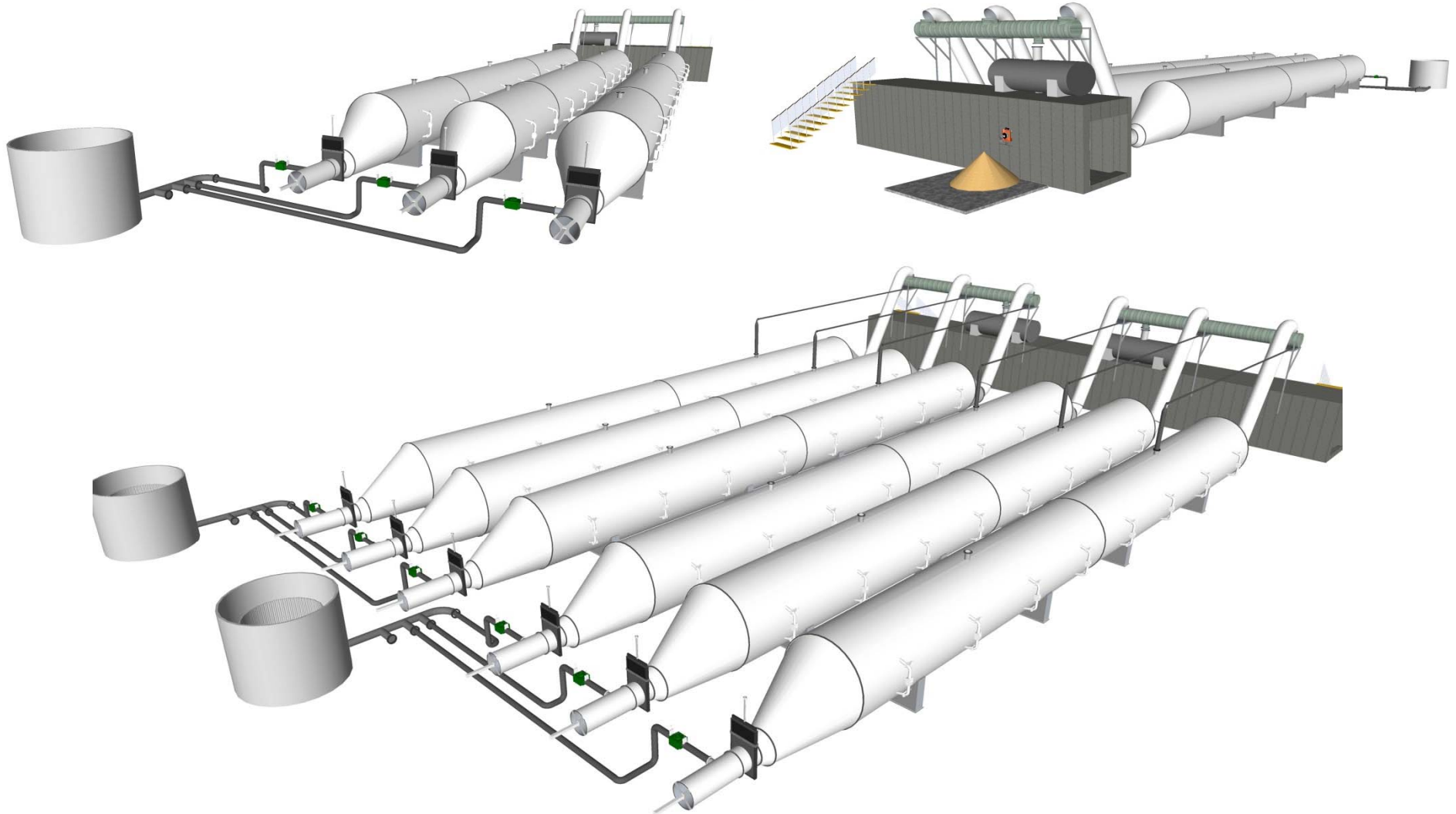


Avatar AD System: Finance Digester Systems for Any Size Operation



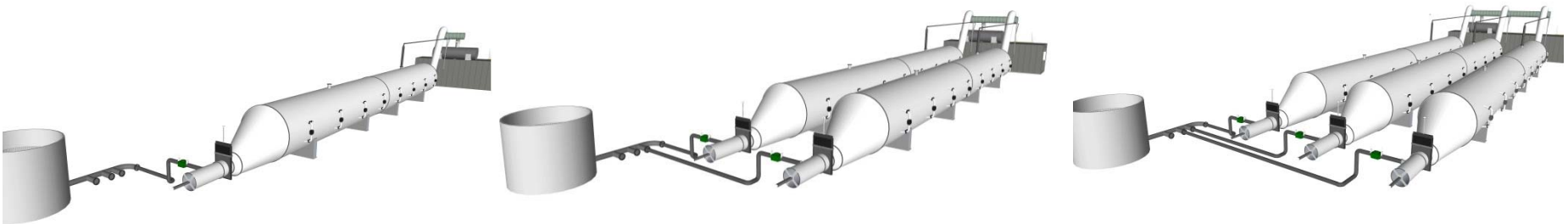
Agriculture Operational Challenges

- ❑ Small agricultural operations tend to be economically disadvantaged, under-served and resource-poor, and face significant barriers to building and maintaining effective agricultural digester systems.

- ❑ Common challenges to achieving and maintaining agricultural digester systems faced by small agricultural operations include (but are not limited to):
 - Economic / financial limitations;
 - Inability to sustain small-scale systems(lack of economies of scale);
 - Inability to support and maintain system operations;
 - Lack of managerial experience and consistency;
 - Geographic isolation / remoteness.
 - Inability to secure appropriate amounts of feedstock for digester system

Avatar Anaerobic Digester System Benefits

- A modular and scalable platform.
 - Can be constructed in phases.



- Internal R&D facility. Determine Optimum Blend!
 - Can target specific blends of materials for optimal system efficiency and effectiveness.
- Service first-firm. Providing service, maintenance and response teams.
 - Full Training of on-site personnel, Complete Emergency Response Planning, Detailed Operations Manual Provided, 24/7/365 Support via remote online access.
- Commitment to clean renewable energy.
 - Continuous R&D of digestible materials driving industry and company forward.

Avatar Technology: Modular Segmental Hull Components

AVATAR
A RENEWABLE ENERGY COMPANY

Standard Features:

- Fiberglass Composite Components
- Standardized Molds
- Can be Mass Produced
- Segmental Design

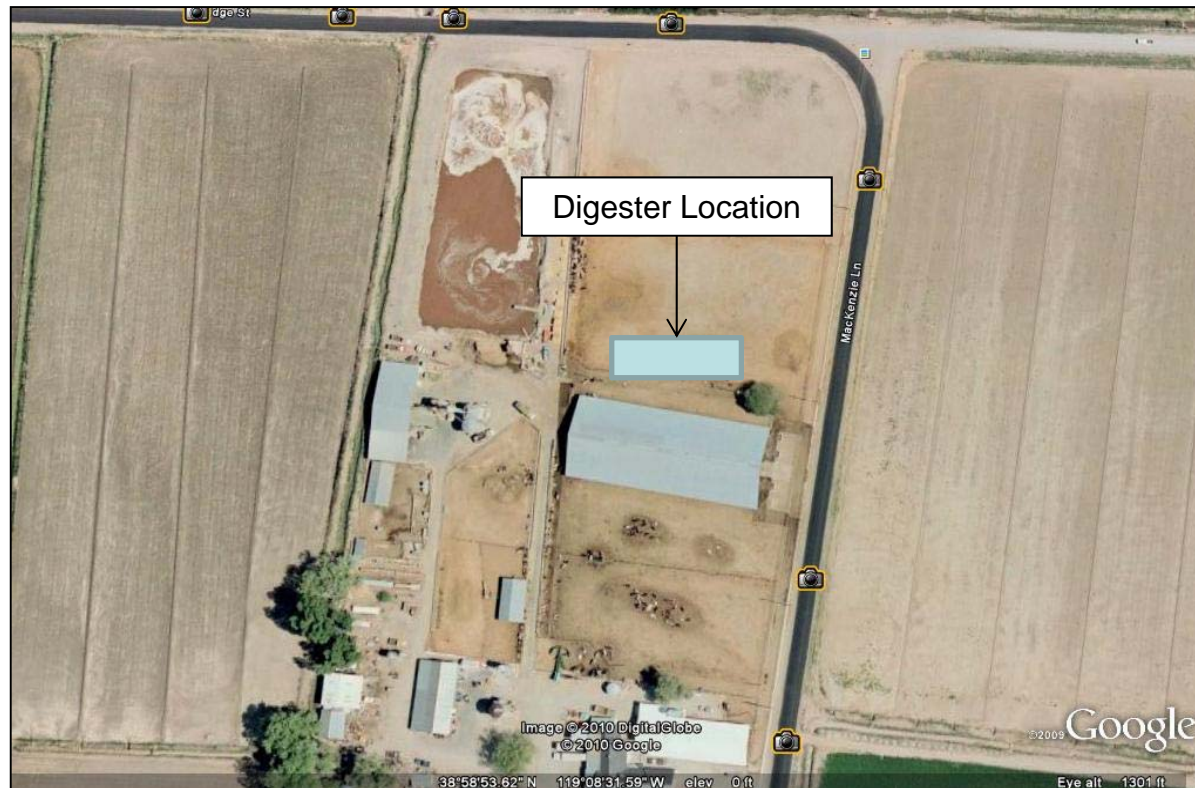


Financing Options

- Standard:
 - Grants, Subsidies, & Loans from personal bank
- Leasing:
 - Typically involves 3rd party lender & 10 – 20% Equity.
 - Provides bridge loan for construction.
 - Terms based upon average returns; 5-7 years fixed APR.
- Rental:
 - Agreement between farm and tech provider.
 - Land and manure for bedding & energy.
 - 5 to 10 year terms with service agreements.
- ESCO:
 - 3rd Party Investor to fund entire project.
 - Typically requires 20 – 30% ROI on project with PPA & Attributes.
 - Farmer retains bedding, fertilizer, and heat.

Frade Ranch, NV – Rental

- 290 Cows Flush Dairy
- AnD 3B87-8
- Summer 2012 Construction Project



Desert Hills Dairy, NV - ESCO

- 10,000 Milkers Flush Dairy
- AnD 2B149-12
- Summer 2012 Construction Project



Olsen Bros Hillside Dairy, NV - Lease

- 2,000 Cows Flush Dairy
- AnD 2B224-12
- Summer 2012 Construction Project



Questions?

For more information visit us online at

www.AvatarEnergy.com

You can also find us on Facebook, LinkedIn or Twitter

THANK YOU